

# Formal Public Scoping Meeting

*Pilot Butte Watershed Plan/Environmental Impact Statement*

July 19, 2022




# Formal Public Scoping Meeting

*Pilot Butte Watershed Plan/Environmental Impact Statement*

## This meeting has five essential purposes

- ✓ Describe the proposed project
- ✓ Explain the process for an EIS and NEPA
- ✓ Describe how the public can provide input and learn more about the project
- ✓ Provide the project's purpose and need
- ✓ Present the schedule and project steps



Scoping meetings are part of the NEPA (National Environmental Policy Act) process for an Environmental Impact Statement

# Central Oregon Irrigation District

*Pilot Butte Watershed Plan/Environmental Impact Statement*



ESTABLISHED  
**1900**



PATRONS  
**3,590**



ACRES  
**42,666**

# Project Goal

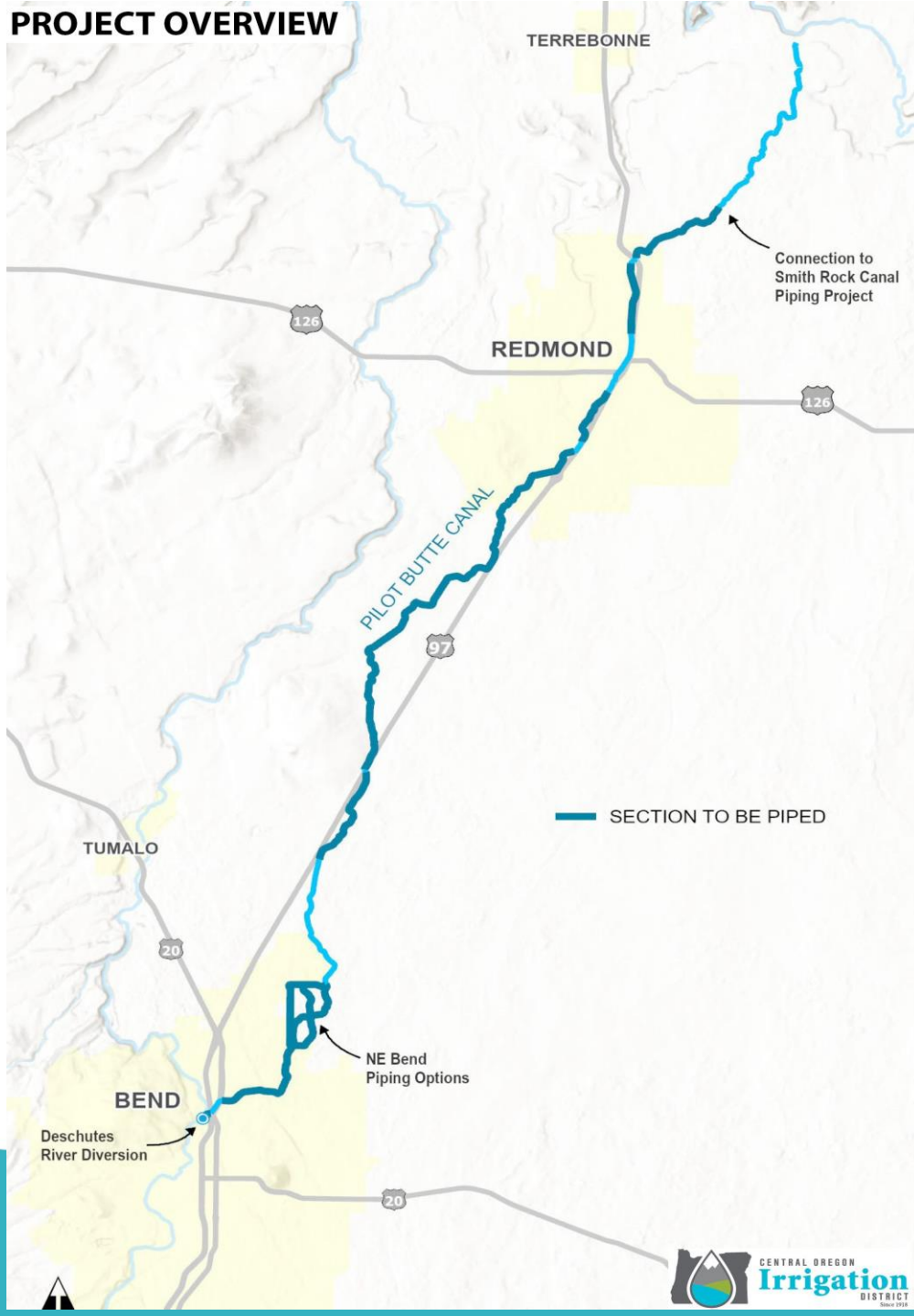
---

*Pilot Butte Watershed Plan/Environmental Impact Statement*

***Eliminate water waste and keep  
more water flowing for  
farmers, food, and fish.***



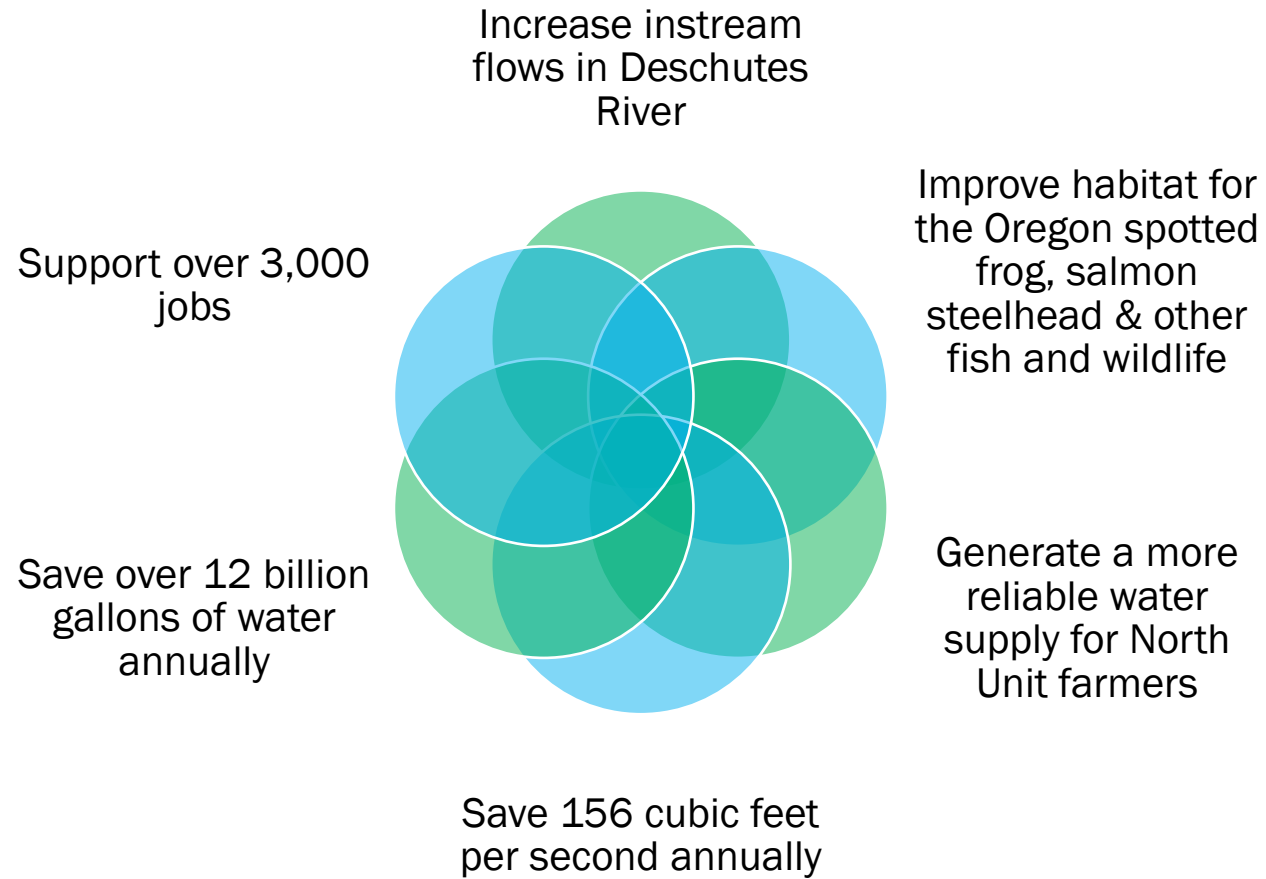
## PROJECT OVERVIEW



- ✓ Pilot Butte Canal – 21 miles
- ✓ Conveys water to 17,338 acres
- ✓ Experiences 156 cfs/50,625 acre-feet of loss per year
- ✓ Continuation of modernization

# Project Benefits

## *Pilot Butte Watershed Plan/Environmental Impact Statement*



# Introductions

*Pilot Butte Watershed Plan/Environmental Impact Statement*



United States  
Department of  
Agriculture

Natural Resources Conservation Service

**Parametrix**



# Natural Resources Conservation Service

*Pilot Butte Watershed Plan/Environmental Impact Statement*

## Watershed Protection and Flood Prevention Act (PL83-566 or PL-566) of 1954

- Local projects installed with Federal assistance (not Federal projects)
- NRCS provides technical assistance
- NRCS ensures compliance with NEPA
- State Conservationist is the responsible Federal official



United States  
Department of  
Agriculture

Natural Resources Conservation Service



# Natural Resources Conservation Service

*Pilot Butte Watershed Plan/Environmental Impact Statement*

## Local Sponsor Requests Assistance

The applicant must:

- Have an initial understanding of problems and opportunities
- Identify underlying reasons for the action
- Set goals associated with the action



United States  
Department of  
Agriculture

Natural Resources Conservation Service

# Natural Resources Conservation Service

*Pilot Butte Watershed Plan/Environmental Impact Statement*

## Aligning the Purpose and Need with Federal Policy

- National Environmental Policy Act (NEPA)
- PL-566 Authorized Project Purpose
- Principles, Requirements and Guidelines (PR&G)



United States  
Department of  
Agriculture

Natural Resources Conservation Service

# NEPA and Environmental Impact Statement

---

*Pilot Butte Watershed Plan/Environmental Impact Statement*

What is NEPA and what is its purpose?

Why is an EIS required for this project?

What else is required for this NRCS EIS?

What issues will be addressed in the Pilot Butte Canal EIS?

How can people participate in the process?

# What and Whose Actions Are Subject to NEPA Review?

*Pilot Butte Watershed Plan/Environmental Impact Statement*

- Federal agency actions (which include permitting or funding for private and for local and state agency proposals)
- E.g., federal funding for canal piping

# What Does NEPA Require Federal Agencies To Do?

*Pilot Butte Watershed Plan/Environmental Impact Statement*

- Ensure that environmental factors are considered in their decision making:
  - Prepare a report on the environmental effects of proposed federal agency actions before they occur
  - Be multi-disciplinary in analysis
  - Coordinate with other agencies; gather public input
- Develop implementing procedures

# When is an EIS required?

---

*Pilot Butte Watershed Plan/Environmental Impact Statement*

An EIS is required when:

- A covered, proposed action is likely to have a significant effect on the environment
- or -
- When meeting agency specified thresholds – E.g., NRCS regulations specify that:
  - Projects receiving over \$25M require Congressional approval, and
  - Projects requiring Congressional approval must complete an EIS



# What else do NRCS Regulations Require?

---

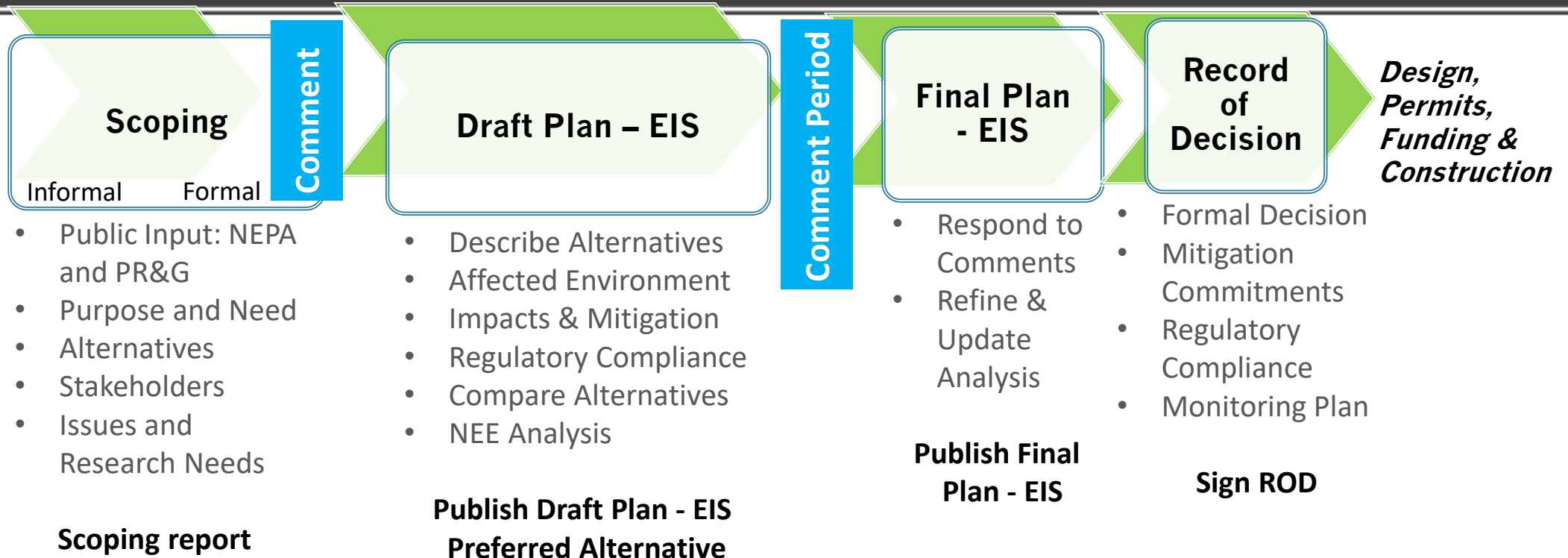
*Pilot Butte Watershed Plan/Environmental Impact Statement*

## Prepare a combined “Watershed Plan-EIS”

- Per PL-566 the Watershed Protection and Flood Prevention Act, as amended Implemented through National Watershed Program Manual and Handbook
- Principles, Requirements and Guidelines for Water and Related Land Resources Implementation Studies (PR&G)
  - Federal Objectives (weigh against project purpose)
  - Guiding Principles
  - National Economic Efficiency (NEE) analysis
  - Ecosystem services tradeoffs

# Watershed Plan-EIS Process

## *Pilot Butte Watershed Plan/Environmental Impact Statement*



# What kinds of impacts are considered?

Direct, Indirect, Temporary, Long-term and Cumulative Impacts

*Pilot Butte Watershed Plan/Environmental Impact Statement*

Land Use

National  
Economic  
Efficiency (PR&G)

Natural Areas

Ecosystem  
Services

Social Issues

Displacements  
and Acquisitions

Transportation

Environmental  
Justice

Scenic beauty

Parklands and  
Recreation

Cultural  
Resources

Public Health  
and Safety

Soils and  
Geology

Hazardous  
Materials

Air Quality

Noise and  
Vibration

Groundwater  
and Surface  
water

Floodplain  
management

Vegetation

Fish and Wildlife

Other concerns

# EIS Coordination

---

## *Pilot Butte Watershed Plan/Environmental Impact Statement*

- EIS process requires coordination between multiple groups:
  - NRCS – federal lead agency
  - COID – sponsor
  - Parametrix – EIS lead
  - Farmers Conservation Alliance – Watershed planning
  - Resource agencies – NMFS, USFWS, EPA, Regional Solutions, DEQ, DSL, SHPO, ODFW, OWRD and others
  - Local jurisdictions and Tribes – City of Bend, City of Redmond, Deschutes County, Confederated Tribes of Warm Springs, DBBC

# Draft Purpose and Need

## *Pilot Butte Watershed Plan/Environmental Impact Statement*

### Purpose and Need

[Required EIS element that defines why project is being done.]

The purpose of this project is Agricultural Water Management<sup>[1]</sup>,<sup>[2]</sup> through irrigation water conservation in District-owned infrastructure, improvement of water delivery reliability to District patrons, and reduction of long-term operation and maintenance costs on approximately 21 miles of the District-owned Pilot Butte Canal (PBC). The project is needed to address the following watershed problems and resource concerns: water loss in District conveyance systems, and water delivery and operation and maintenance inefficiencies. Implementation of the proposed action would address the sponsors' objectives and goals to reduce seepage loss and provide better-managed water diversions for farm use; support agricultural land use; improve streamflow for fish, aquatic, and riparian habitat; and increase public safety.

<sup>[1]</sup> A description of Authorized Purposes can be found in 390-NWPM, Part 500, Subpart A, Section 500.3B.

<sup>[2]</sup> To meet NRCS requirements for a federal investment in a water resources project, the project must meet the Federal Objective set forth in the Water Resources Development Act of 2007 and be an authorized project purpose under Sections 3 and 4 of Public Law 83-566.

# Project Alternatives

---

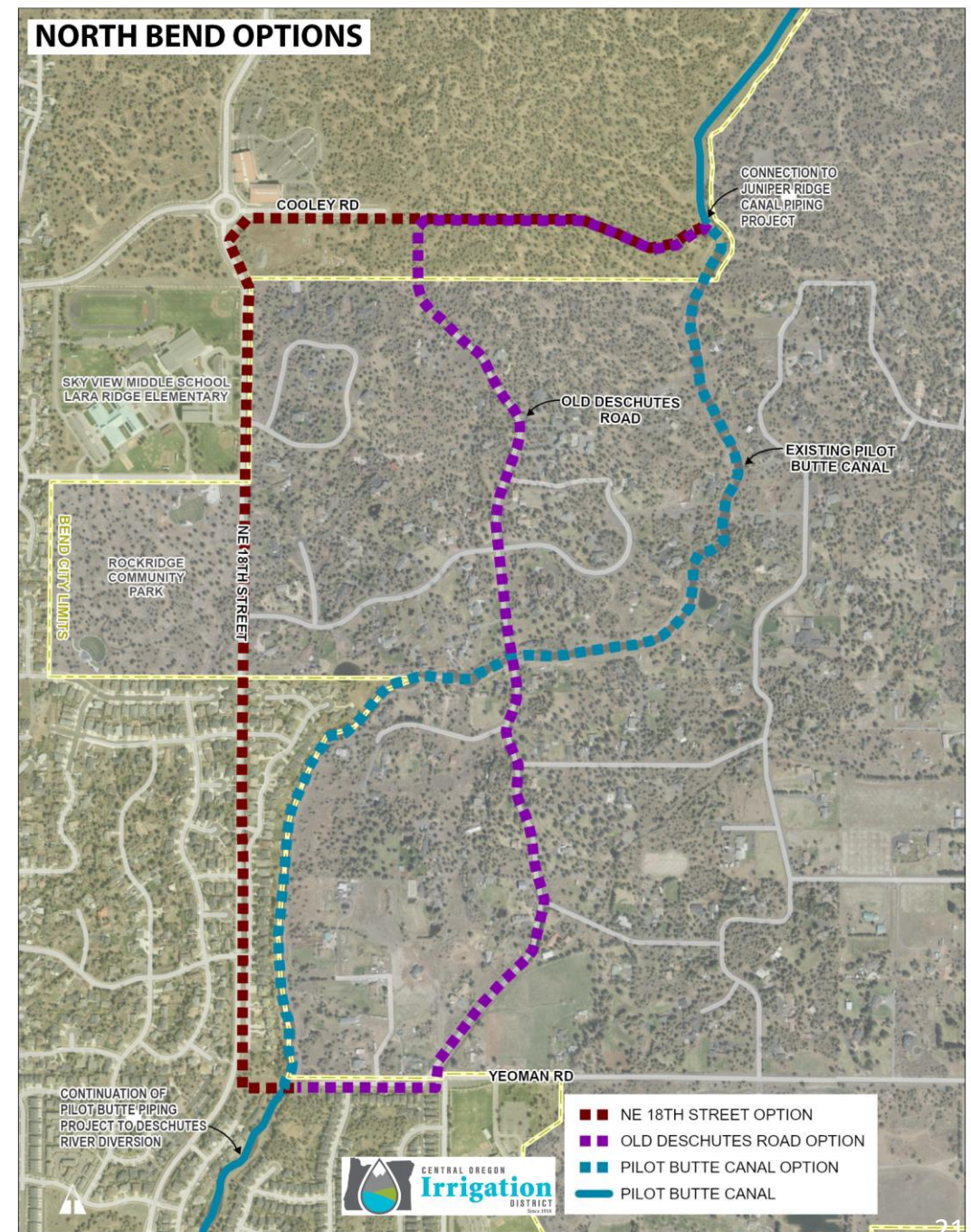
## *Pilot Butte Watershed Plan/Environmental Impact Statement*

- Conservation of 21 miles of District infrastructure.
- NEPA requires analysis of alternatives, including a No Action Alternative.
- No Action Alternative - District would continue to operate and maintain its existing canal, lateral, and pipe system in its current condition.
  - Modernization of COLD's infrastructure would not be reasonably certain to occur, as funding at the scale necessary to modernize COLD's remaining infrastructure is not anticipated from other sources.
  - The No Action Alternative would not meet the PBC Project's purpose and need.



# Action Alternatives

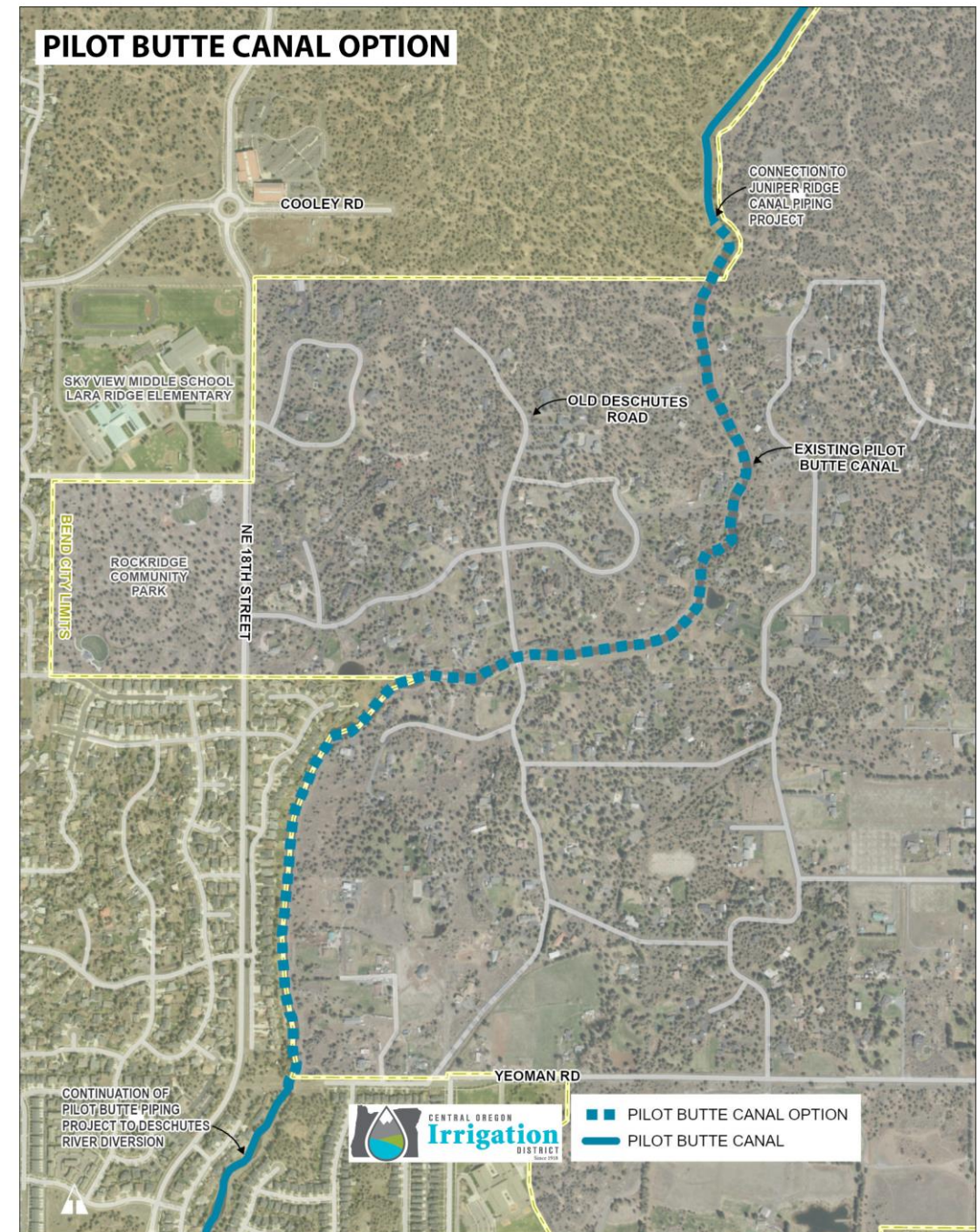
One Build Alternative with three alignment options between Yeoman Road and Cooley Road





# Pilot Butte Canal Option

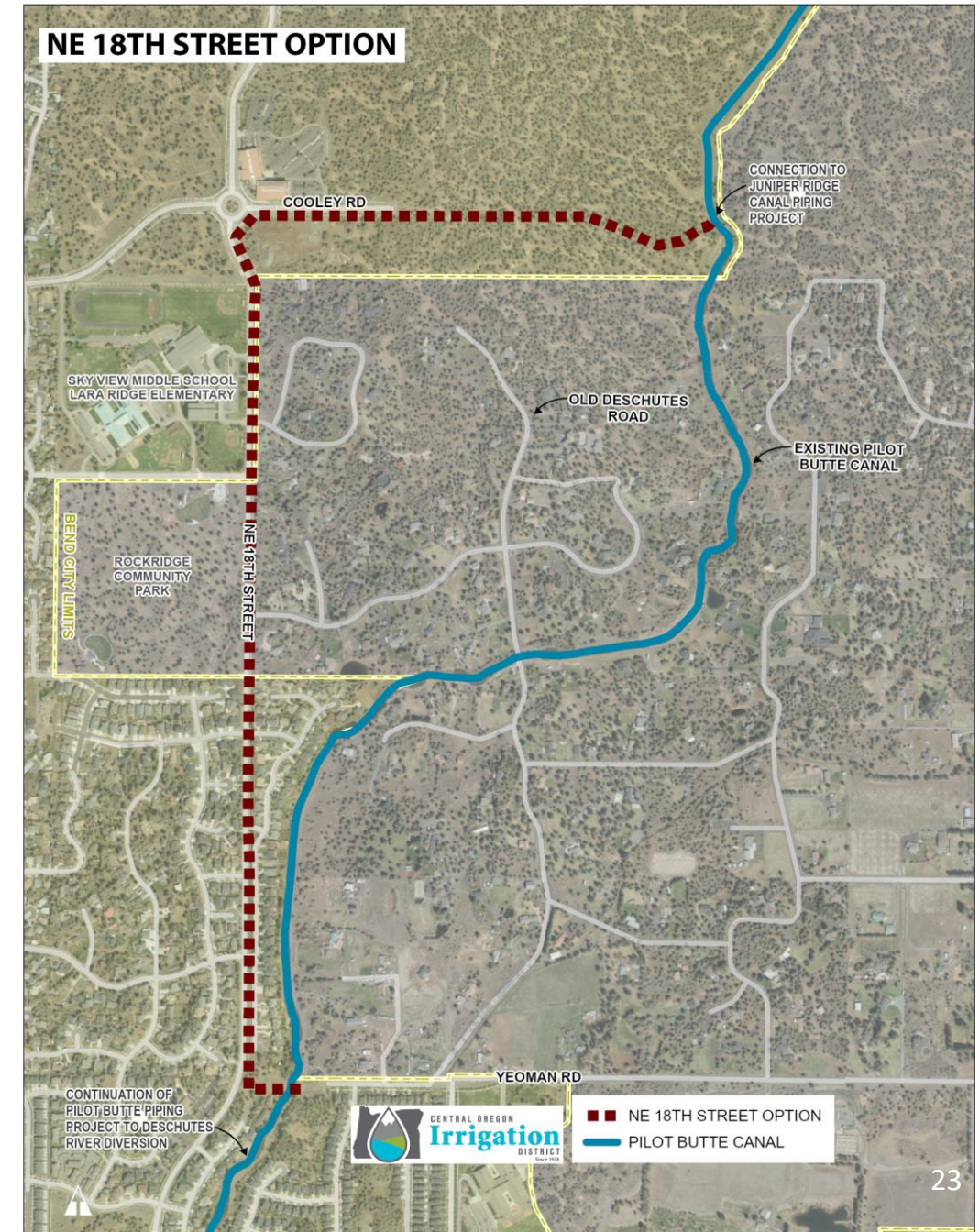
- Would replace the open channel with pipe directly within existing alignment
- Note: would be built wholly within section of canal listed on National Register of Historic Places
- Approximately 1.5 miles in length





# NE 18th Street Option

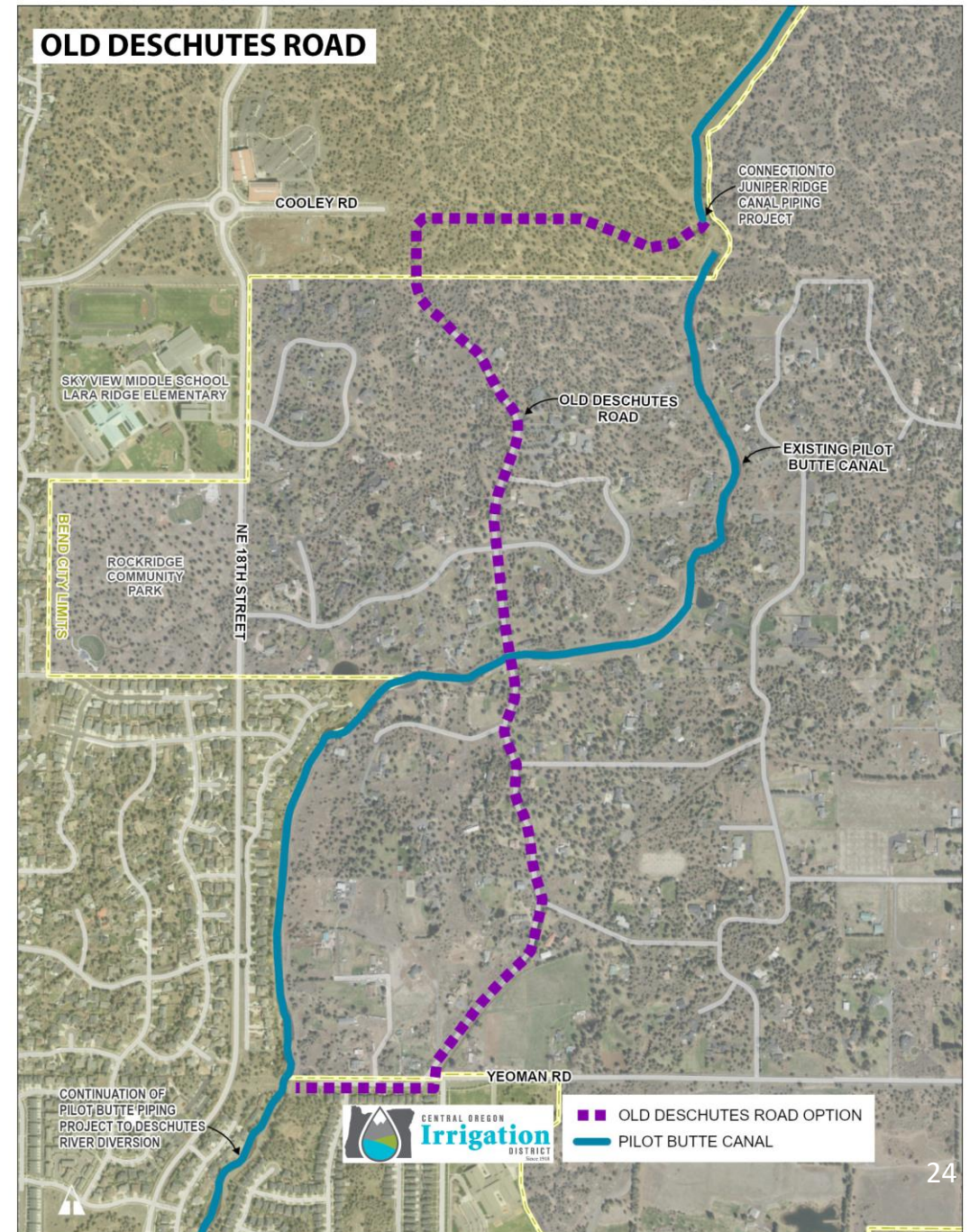
- Would place pipe in new alignment along NE 18th.
- Begin at intersection of NE 18th and Yeoman, extending north to NE 18th and Cooley and terminate at Pilot Butte Canal.
- Approximately 1.9 miles in length.





# Old Deschutes Road Option

- Pipe in new alignment from intersection of Pilot Butte Canal and Yeoman Road east to Old Deschutes Road then north to northern terminus of road and across undeveloped land and then east on same alignment as NE 18th Street option to Pilot Butte Canal.
- Approx. 1.4 miles in length.



# Construction Description Common to All Alternatives

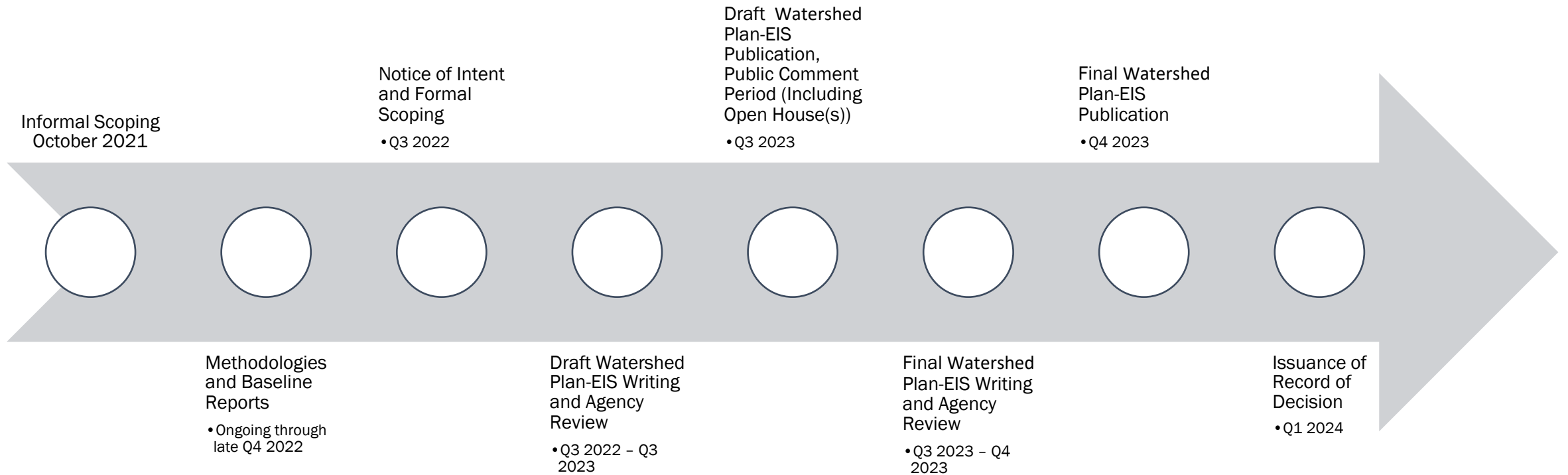
---

## *Pilot Butte Watershed Plan/Environmental Impact Statement*

- Construction to occur generally during non-irrigation season in canal (October to April). Work outside of canals could proceed during summer months. Multiple seasons.
- Construction to include mobilization and staging of equipment, pipe delivery to construction areas, trench excavation, pipeline fusing, pipe placement, compaction of backfill, and restoration/reseeding of area.
- Emphasis on using previously disturbed and accessible areas.
- When possible, PBC to be accessed from COLD's maintenance roads. Temporary travel routes may be needed.
- Minimization of vegetation clearing and trees only removed if no other alternative.

# Project Tasks and Schedule

## *Pilot Butte Watershed Plan/Environmental Impact Statement*





# How Can Citizens/Stakeholders Participate?

*Pilot Butte Watershed Plan/Environmental Impact Statement*

Comment during scoping period and Draft EIS public comment period

Provide comments/input on:

- Involvement and analysis methods
- Needs and purposes for the project
- Alternatives to consider
- Issues/resources to consider
  - NEPA & PR&G
- Impacts
- Measures to avoid, minimize or mitigate impacts
- Preferred Alternative

# Provide Input & Rationale

*Pilot Butte Watershed Plan/Environmental Impact Statement*

Comment	Say why
Consider this resource	What's important about that resource? How should it be considered?
Add a new alternative	Why? How would it be better than the other alternatives? Purpose and need; cost; impacts?
More analysis is needed	What analysis should be done, and how might additional information/analysis change findings?
We need certain mitigation	What impact would be minimized? What benefit would be provided?
This is the best alternative	Why? What makes it better?

# Comments

---

*Pilot Butte Watershed Plan/Environmental Impact Statement*

- ✓ Emailed to [EisComment@coid.org](mailto:EisComment@coid.org)
  - ✓ Submitted online at [coidpiping.com/contact](http://coidpiping.com/contact)
  - ✓ Submitted via phone to (541) 699-4415
  - ✓ Mailed to: Central Oregon Irrigation District  
1055 SW Lake CT, Redmond, OR 97756
- 

Comments will be received through July 26, 2022.





[www.CoidPiping.com](http://www.CoidPiping.com)

